

Cynhyrchiad Polka a Theatr Iolo  
A Polka and Theatr Iolo co-production

**TOUR PACK / PECYN DAITH**



# TIDY

*Emily Gravett*

**On Tour / Ar Daith  
10/02/25 - 16/03/25**



# Creative Team / Tîm Creadigol

Based on the illustrated children's book by Emily Gravett  
Co-created by Lee Lyford, Lucy Rivers & Rachael Canning

Yn seiliedig ar y llyfr darluniedig i blant gan Emily Gravett  
Cyd-grëwyd gan Lee Lyford, Lucy Rivers a Rachael Canning



Director  
Cyfarwyddwr  
**Lee Lyford**



Composer (Music and Lyrics)  
Cyfansoddwr (Cerddoriaeth a Geiriau)  
**Lucy Rivers**



Set, Costume + Puppetry Designer  
Cynllunydd Set, Gwisgoedd a Phypedau  
**Rachael Canning**

Sound Designer  
Cynllunydd Sain  
**Yvonne Gilbert**

Lighting Designer  
Cynllunydd Goleuo  
**Jane Lalljee**

Tidy is based on based on the award-winning picture book by on Emily Gravett. TIDY © Emily Gravett 2016 - Two Hoots, Macmillan Children's Books.  
Welsh adaptation, TACLUS © Rily Publications Ltd

---

Mae Tidy yn seiliedig ar y llyfr lluniau arobryn gan Emily Gravett. TAclus © Emily Gravett 2016 - Two Hoots, Macmillan Children's Books.  
Addasiad Cymraeg, TACLUS © Rily Publications Ltd





A Polka and Theatr Iolo co-production

# TIDY

Based on the illustrated children's book by Emily Gravett  
Co-created by Lee Lyford, Lucy Rivers & Rachael Canning

Pete the badger likes everything to be neat and tidy: the flowers, the leaves, even the other animals. But, when autumn comes, he gets a little bit carried away with cleaning up the forest and accidentally destroys his own home!

Based on the much-loved children's book by author and illustrator, Emily Gravett, Tidy is a gentle but cautionary tale about the value of the world around us and what happens if we don't look after it.

With beautiful puppets, original music and a touch of silliness, this playful story will delight young audiences, as it explores how everyone needs a little bit of wild chaos in their lives.

Cynhyrchiad Polka a Theatr Iolo

# TACLUS

Yn seiliedig ar y llyfr darluniedig i blant gan Emily Gravett  
Cyd-grëwyd gan Lee Lyford, Lucy Rivers a Rachael Canning

Mae Pete y mochyn daear yn hoffi cadw pob dim yn dwt ac yn daclus: pob blodyn, pob deilen, a phob anifail fel pin mewn papur. Pan ddaw'r hydref, mae e'n tacluso, yn tacluso ac yn tacluso unwaith eto, nes ei fod yn difetha'r goedwig gyfan, ac yn colli ei gartref!

Yn seiliedig ar y llyfr hynod boblogaidd i blant gan yr awdur a'r darlunydd Emily Gravett, mae Tidy yn chwedl sy'n ein hatgoffa ni mor bwysig yw'r byd o'n cwmpas ni a'r hyn sy'n digwydd pan na fyddwn yn gofalu amdano.

Gyda phypedau hyfryd, cerddoriaeth wreiddiol a thamaid o ddwli ac anrhefn pur, dyma'r stori berffaith i ddiddanu cynulleidfaoedd ifanc.



**VIEW TRAILER  
GOLWG AR TRELER**

**Age guidance  
Canllaw oedran  
3-7 yrs/oed**



## Target Audience

- Those who love the illustrated children's book Tidy, by Emily Gravett, and the Welsh adaptation Taclus (translated by Mari George)
- Existing arts attendees who are looking for their child's first theatre experience
- Parents / grandparents of pre-school children (3+)
- Parents / grandparents of school age children (up to age 7)
- Private nursery settings who look after children aged 3-5
- English and Welsh medium primary schools (Nursery – Y2)
- Welsh medium nursery settings / groups, such as Cylch Meithrin

## Selling Points:

- Based on the well-known illustrated children's book by Emily Gravett
- Gentle first theatre experience for young children age 3-7
- Beautiful handmade puppets
- Live music and original songs
- Playful and fun storytelling that will make young audiences giggle!
- A lovely way for families to spend quality time together
- An age-appropriate way for young children to explore how to look after the natural world

## Additional selling points for Welsh language performances:

- For those who speak Welsh at home, Taclus offers an opportunity for families to enjoy a show in their first language
- For families who don't speak Welsh at home and are considering sending their child to a Welsh medium school or Cylch Meithrin, the show is a gentle introduction to Welsh.
- For children who speak Welsh at school, but not at home, the performance offers a way for the children to experience Welsh in different places, as well as with their families.

## Y Gynulleidfa Darged

- Y rheiny sydd wrth eu boddau â'r llyfr darluniedig i blant, Tidy, gan Emily Gravett, a'r addasiad Cymraeg, Taclus, (addasiad Mari George)
- Y rheiny sydd eisoes yn mynychu'r celfyddydau ac sy'ch chwilio am brofiad theatr cyntaf i'w plentyn
- Rhieni / teidiau a neiniau plant oed cyn ysgol (3+)
- Rhieni / teidiau a neiniau plant oed ysgol (hyd at 7 oed)
- Meithrinfeydd preifat sy'n gofalu am blant 3-5 oed
- Ysgolion cynradd Cymraeg a Saesneg eu hiaith (meithrinfa – Bl2)
- Meithrinfeydd / grwpiau cyfrwng Cymraeg i blant megis Cylch Meithrin

## Pwyntiau Gwerthu

- Yn seiliedig ar y llyfr darluniedig adnabyddus i blant gan Emily Gravett
- Profiad theatr cyntaf ysgafn i blant ifanc 3-7 oed
- Pypedau prydferth a wnaed â llaw
- Cerddoriaeth fyw a chaneuon gwreiddiol
- Stori chwareus a hwylus – yn sicr o ddiddanu cynulleidfaoedd ifanc!
- Ffordd hyfryd i deuluoedd dreulio amser gyda'i gilydd
- Ffordd addas i blant ifanc edrych ar y thema o sut i ofalu am y byd naturiol

## Pwyntiau gwerthu ychwanegol ar gyfer y perfformiadau Cymraeg

- I'r rheiny sy'n siarad Cymraeg yn y cartref mae Taclus yn cynnig cyfle i deuluoedd fwynhau sioe yn eu hiaith gyntaf
- I deuluoedd nad ydynt yn siarad Cymraeg yn y cartref ac sy'n ystyried anfon eu plentyn i ysgol Gymraeg neu i Gylch Meithrin, mae'r sioe'n gyflwyniad ysgafn i'r Gymraeg.
- I blant sy'n siarad Cymraeg yn yr ysgol ond nid yn y cartref, mae'r perfformiad yn rhoi cyfle i blant brofi'r Gymraeg mewn gwahanol leoedd, a gyda'u teuluoedd.





# Frequently Asked Questions

## Can I bring a younger / older sibling?

We believe that this production is most suitable for children aged 3-7 and that children in that age group will get the most out of the performance.

However, we recognise that you may wish to bring children of a different age; perhaps because you have a baby you are breast/chest feeding or an older child who has a disability or developmental delay. We trust you as parents or carers to make a decision that is right for your family, but we're here to help if you need more information about the performance.

We also recommend reading Theatr lolo's guide to Age Guidance and Restrictions

## What's the seating like?

The seating for this performance is theatre seating, where the action takes place on a stage in front of the seats.

Please check with the venue for further information about seating arrangements for very young children.

Some venues offer free or discounted seats for babies who can be held during the performance.

If you would prefer a more relaxed environment, where audience members are free to move around and talk or vocalise however they wish, why not try a Relaxed Performance.

## Do you have any accessible performances for those who are neurodivergent, deaf, blind and /or disabled?

Yes! The tour will include Relaxed and Audio Described Performances. (Check tour details when announced). Subject to funding, we are also hoping to provide BSL and captioned performances. If you would like to know more about our Accessible Performances, visit our Access for All page on our website to find out more.

## I've got another question! But the answer isn't here...

Drop us an email on [hello@theatriolo.com](mailto:hello@theatriolo.com) and one of the Theatr lolo team will be happy to help!





# Cwestiynau Cyffredin

## **Gai ddod â brawd neu chwaer hŷn / iau i'r perfformiad?**

Credwn fod y cynhyrchiad hwn fwyaf addas i blant 3-7 oed ac mai plant yn yr ystod oedran yma fydd yn cael y mwyaf o'r sioe.

Fodd bynnag, rydyn ni'n cydnabod y mae'n bosib y byddwch am ddod â phlant eraill hŷn/iau gyda chi; efallai gan fod gennych faban yr ydych yn ei b/fwydo ar y fron/y frest neu blentyn hŷn sydd ag anabledd neu sydd ag oedi yn eu datblygiad. Rydyn ni'n ymddiried ynoch chi fel rhieni neu ofalwyr i wneud penderfyniad sy'n iawn i chi fel teulu, ond rydyn ni yma i helpu os ydych hi angen rhagor o wybodaeth ynglŷn â'r perfformiad.

Rydyn ni hefyd yn argymhell darllen Canllaw Theatr Iolo i Ganllawiau a Chyfyngiadau Oedran

## **Beth yw trefn y seddi?**

Mae'r gynulleidfa yn eistedd mewn seddi theatr arferol ac yn gwyllo'r perfformiad sy'n digwydd ar y llwyfan yn y cynhyrchiad hwn.

Gofynnwn i chi ofyn i'r ganolfan os ydych am gael rhagor o wybodaeth ynglŷn â threfniadau seddi ar gyfer plant ifanc iawn. Mae rhai canolfannau yn cynnig seddi am ddim neu am bris gostyngol i fabanod y byddwch yn gafael ynddynt ar eich glin yn ystod y perfformiad.

Os oes well gennych awyrgylch fwy hamddenol, lle mae croeso i'r gynulleidfa symud o'i seddi a siarad / gwneud sŵn fel y dymunant, beth am roi cynnig ar Berfformiad Ymlaciedig?

## **A oes perfformiadau hygyrch ar gael ar gyfer y rheiny sy'n niwrowahanol, yn fyddar, yn ddall ac / neu'n anabl?**

Oes! Bydd y daith yn cynnwys Perfformiadau Ymlaciedig a Pherfformiadau gyda Sain Ddisgrifiad. (Cymerwch olwg ar fanylion y daith pan gân nhw eu cyhoeddi). Rydyn ni'n gobeithio cynnal perfformiadau gydag Iaith Arwyddion Prydain a chapsiynau, yn ddarostyngedig i gyllid. Os hoffech wybod mwy am ein Perfformiadau Hygyrch, ewch i dudalen hygyrchedd i bawb ar ein gwefan.

## **Mae gen i gwestiwn arall! Ond nid yw'r ateb yma...**

Anfonwch e-bost aton ni at [hello@theatriolo.com](mailto:hello@theatriolo.com) a bydd aelod o dîm Theatr Iolo yn hapus i helpu!









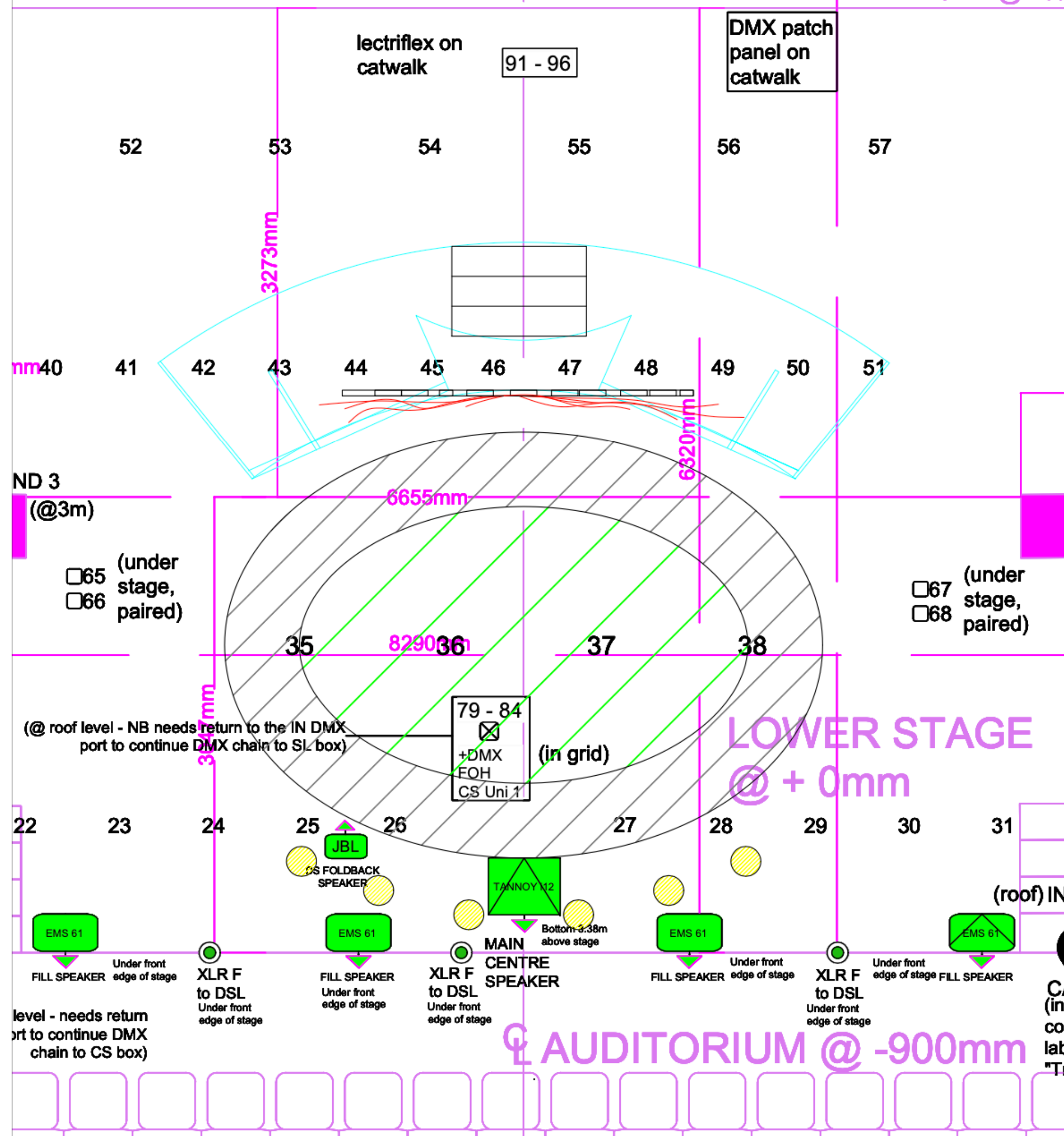
# Technical Specifications

## Manylebau Technegol

Staging Llwyfannu	6m by 6m
Get In	6hrs
Runtime Amser rhedeg	Approx 45min (no interval) Tua 45 munud (dim egwyl)
Touring Company Cwmni Teithiol	A cast of 3 Actors, 1 Stage Manager Cast o 3 Actor, 1 Rheolwr Llwyfan
LX Golau	A lighting plan will be sent out in advance of the performance date. Bydd cynllun goleuo yn cael ei anfon allan cyn dyddiad y perfformiad.
Sound Sain	QLab system to be provided by the company. Where available, we will use the in-house PA system and Sound Card. 1 Operator required. QLab system to be provided by the company. Where available, we will use the in-house PA system and Sound Card. 1 Operator required.

**A full Technical Plan will be available on request.**  
**Bydd Cynllun Technegol llawn ar gael ar gais.**

Access Mynediad	Audio Described Performances available Captioned and Relaxed available Perfformiadau Sain Ddisgrifedig ar gael Capsiwn ac Ymlaciedig ar gael
Workshop/Activity Gweithdy/Gweithgaredd	Ticket and workshop offer for schools Workshops for schools in the venue on the day of the show. Cynnig tocyn a gweithdy i ysgolion Gweithdai i ysgolion yn y lleoliad ar ddiwrnod y sioe.











@theatriolo



**Theatr Iolo's vision is to have a society in which all children can feel empowered and inspired.**

**We strive to do this by enriching the lives of children through memorable experiences that challenge the mind and stir the imagination.**

Theatr Iolo has been at the forefront of creating theatre for children in Wales for over thirty-five years.

We are passionate about nurturing and igniting the imagination and creativity of young minds, to help children make sense of the world around them and to find their place within it.

We work with the best artists, writers and creatives, to create memorable and bold live theatre, workshops and activities in both English and Welsh.

Our work for babies, children and teenagers is toured across Wales, the UK and internationally.

**Gweledigaeth Theatr Iolo yw cael cymdeithas lle gall pob plentyn deimlo wedi'i rymuso a'i ysbrydoli. Y**

**mdrechwn i wneud hyn drwy gyfoethogi bywydau plant trwy brofiadau cofiadwy sy'n herio'r meddwl ac yn cynhyrfu'r dychymyg.**

Mae Theatr Iolo wedi bod ar flaen y gad yn creu theatr i blant Cymru ers dros dri deg pump o flynyddoedd.

Rydym yn frwd dros feithrin a thanio dychymyg a chreadigedd meddyliau ifanc, i helpu plant i wneud synnwyr o'r byd o'u cwmpas ac i ddod o hyd i'w lle ynddo.

Rydym yn gweithio gyda'r artistiaid, yr awduron a'r bobl greadigol gorau, i greu theatr fyw gofiadwy a beiddgar, gweithdai a gweithgareddau yn y Gymraeg a'r Saesneg.

Mae ein gwaith ar gyfer babanod, plant a phobl ifanc yn eu harddegau yn cael ei deithio ledled Cymru, y DU ac yn rhyngwladol.

For further details about  
**TIDY** please contact

**Aled Lloyd Rees**  
Gweinyddwr Artistig / Artistic Administrator  
**029 2061 3782 or aled@theatriolo.com**

**theatriolo.com**

Am fanylion pellach am  
**TACLUS** Cysylltwch â





# TIDY / TACLUS

**On Tour / Ar daith**  
**10/02/25 - 16/03/25**

Age guidance / Canllaw oedran  
**3-7 yrs/oed**

