

THEATR IOLO + KITSCH & SYNC YN CYFLWYNO \ PRESENT

HOOOF!



Theatr lolo and Kitsch & Sync present

HOOF!

A magical adventure into the limelight

Three little deer make an unexpected discovery when they stumble across an old, abandoned theatre in the woods.

Investigating their new find, this cheeky trio quickly find themselves in spotlight and treading the boards for the very first time!

Will the toe-tapping friends be able to bring the long-forgotten theatre back to life? Or will the lights be turned off forever?

Suitable for all the family

Check out our trailer: <https://youtu.be/-yJJ9oqhx0s>



Performance Guidelines for Audiences

Capacity: 50-250 people, depending on space provided.

For schools, one class or multiple classes can watch the show at the same time.

Target Age: This show is suitable for all the family from toddler to pensioners.

Arrival of audience : 15-30 minutes before performance starts

Performance length: 20-30 minutes

Number of performances: A maximum of 3 performances per day.

Seating: 8 mats will be provided for people to sit on in the front 2 rows. There are then 6 benches provided for the next two rows. The the rest of the audience can stand behind the benches. Audience should also be encouraged to bring their own picnic blankets and foldaway chairs.

Access: The HOOOF! show is very visual and mainly non-verbal, apart from an audio welcome.

For deaf or hearing-impaired customers, they can be provided with a visual guide and a transcript of the audio Welcome.

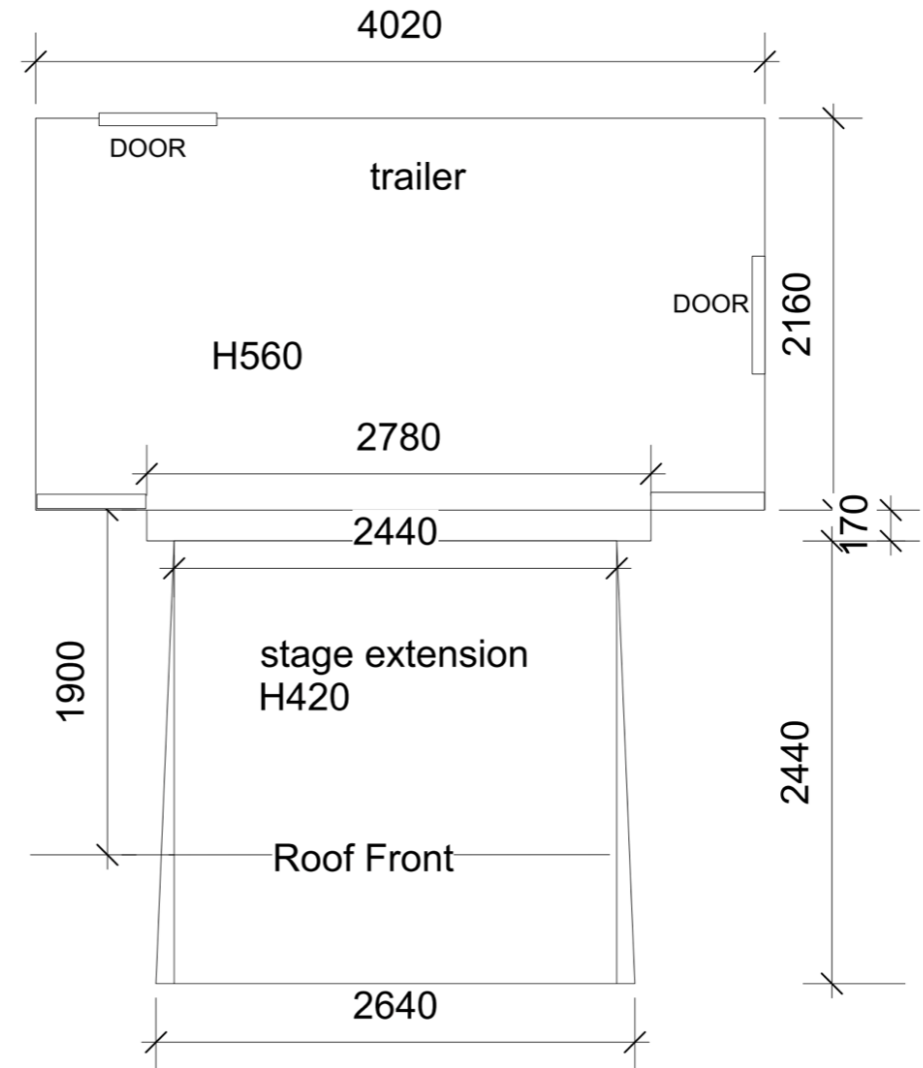
For blind or partially sighted customers, there is a recorded audio introduction available for every show and a touch tour of the set can be arranged. When booking the production, a live audio described performance can also be arranged in advance.



Technical Specifications

Arrival on Site	5 hours prior to first performance
Arrival of Audience	15-30 mins before performance starts
Performance Duration	20 – 30 minutes
Get Out	1 hour after end of final performance
Company	3 Actors, 2 Technical staff

Main Performance Area Required	20m x 20m flat hard-standing area, this is where the trailer will be parked up
Vehicle Access	Access to site required for Transit Van and Trailer Stage (total 12m length)
Power supply within 50 m of performance area	2 x 13 amp
Access to toilet facility for performers and audiences	Ideally from arrival to end of performance
General Requirements but flexible to conditions and require further discussion	Site needs to be accessible to us throughout, with no other vehicle movement
	Ideally not too much external noise.
	<i>As the show is outside it is subject to weather conditions. Performances will not go ahead if heavy rain or high winds.</i>





For further details or to book performances, please contact:

Michelle Perez

Executive Director

029 2061 3782

michelle@theatriolo.com

Zoe Munn

Creative Producer

07939 052899

zoemunn@icloud.com

